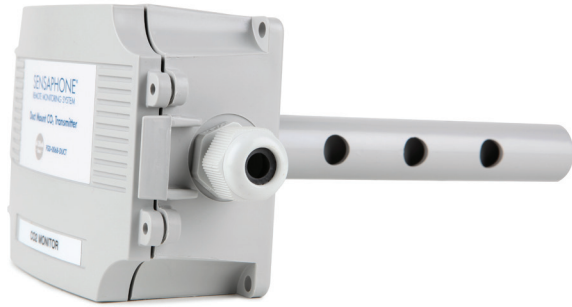


4-20mA Series

4-20mA Type Duct Mount CO2 Transmitter



Monitor CO2 in duct work

The Sensaphone Carbon Dioxide sensor will detect levels of Carbon Dioxide from 0-2,000 ppm. Used with any Sensaphone that will accept a 4-20mA input signal, the device will provide real time data and will cause your Sensaphone to activate an alarm when the CO2 level reaches a set threshold. The sensor is specifically designed to be mounted in a return air duct.

TECH SPECS

Name	4-20mA Type Duct Mount CO2 Transmitter
Sensor Coverage Area	100 m ² (1000 ft ²) typical
Accuracy	±30 PPM + 3% of reading with Auto Cal on
Measuring Range	0 - 2,000 ppm
Response Time	<2 minutes for 90% step change typical
Operating Temperature Range	32° to 122°F 0° to 50°C
Dimensions	5.7 x 3.95 x 2.5" 145 x 100 x 63mm
Sensor Series	4-20mA

All specifications subject to change without notice

Product Name	Part Number
4-20mA Type Duct Mount CO2 Transmitter.	FGD-0068-DUCT
24VDC Power Supply for 4-20mA Sensors	FGD-0070



Family owned and made in the USA since 1985

901 Tryens Road
Aston, PA 19301

Phone: 877-373-2700
Web: sensaphone.com

