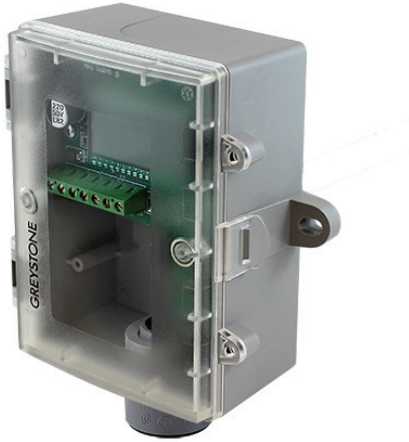


4-20mA
Series

4-20mA Dew Point Sensor



Measure and alarm on dew point

The Sensaphone Dew Point Sensor will measure and provide real time dew point values to any Sensaphone that accepts a 4-20mA signal. When the dew point level falls outside of the Sensaphone's programmed high or low limit, the user will receive an alarm which displays or reads the current dew point value. The sensor comes enclosed in a weatherproof enclosure that is suitable for use in outdoor environments.

TECH SPECS

Name	4-20mA Dew Point Sensor
Measurement Range	-22° to 122°F -30°C to 50°C -4° to 104°F -20° to 40°C 32° to 122°F 0° to 50°C
Accuracy	± 1.8°F ±1°C @40% RH / 25°C
Connection	Hardwired
Dimensions	4.43" x 4.58" 2.11" 112.5 x 116.5 x 53.7mm
Sensor Series	4-20mA Series
Notes	LCD inside unit for setup and local display

All specifications subject to change without notice

Product Name	Part Number
4-20mA Type Dew Point Sensor	FGD-0059-OD
24VDC Power Supply with Battery Backup for 4-20mA	FGD-0070



Family owned and made in the USA since 1985

901 Tryens Road
Aston, PA 19301

Phone: 877-373-2700
Web: sensaphone.com

