

Power Feeder Mount | P/N: 81001386

Summary

The Magswitch Power Feeder Mount offers a powerful connection to quickly attach power feeders to cast iron topped table saws or shapers. Each mounting magnet consists of an array of 6 powerful magnets that are actuated by a single locking switch for convenience and safety. This innovative magnetic technology, originally developed for our industrial markets, now allows small woodworking shops without multiple saws or shapers access to the safety and efficiency of power feeders.



The purchase of a single base product includes 2 mounting magnets that can quickly be attached to smaller power feeders with a standard 2 ½" by 2 ½" mounting hole patterns. Larger power feeders have a standard hole mounting pattern of 3 ½" by 4 ¼", and motors requiring more holding force. These power feeders can be accommodated with the purchase of 2 base products (4 mounting magnets) and our center mounting plate. All 4 magnets attach to the center plate and the large power feeder is then mounted on the center plate.

WARNING!
Do Not Operate Unless In Contact With Ferrous Target

Specifications

Maximum Breakaway Force ^{1,2,4}	1737.56 lbs	789.80 kg
Nominal Maximum Shear ^{1,2,4}	469.26 lbs	213.30 kg
Full Saturation Thickness	0.50 in	12.7 mm
Overall Height (Max)	2.84 in	72.65 mm
Overall Length	8.83 in	224.20 mm
Overall Width	8.52 in	216.50 mm
Net Weight	10.14 lbs	4.60 kg
Magnetic Pole Footprint (2 magnetic assemblies)	8.71x8.44 in	221.20x214.50 mm
Magnetic Pole Footprint (4 magnetic assemblies)	12.48x12.48 in	317.00x317.00 mm

Material Thickness - mm (in)	1.0 (0.04)	1.9 (0.07)	2.70 (0.11)	3.5 (0.14)	4.76 (0.19)	6.35 (0.25)	9.53 (0.38)	12.70 (0.50)
Maximum Force ⁴ - kg (lbs)	151.26 (333.47)	286.40 (631.40)	425.66 (938.42)	243.88 (537.66)	576.54 (1271.05)	610.94 (1346.89)	736.54 (1623.79)	789.40 (1740.33)

¹ Determined in laboratory environment on 2" thick SAE1018 Steel with surface roughness 63 micro inches. Many factors contribute to the actual breakaway force and safe working load in each application. Consult a Magswitch Applications Engineer and test the Magswitch in each application before deployment.

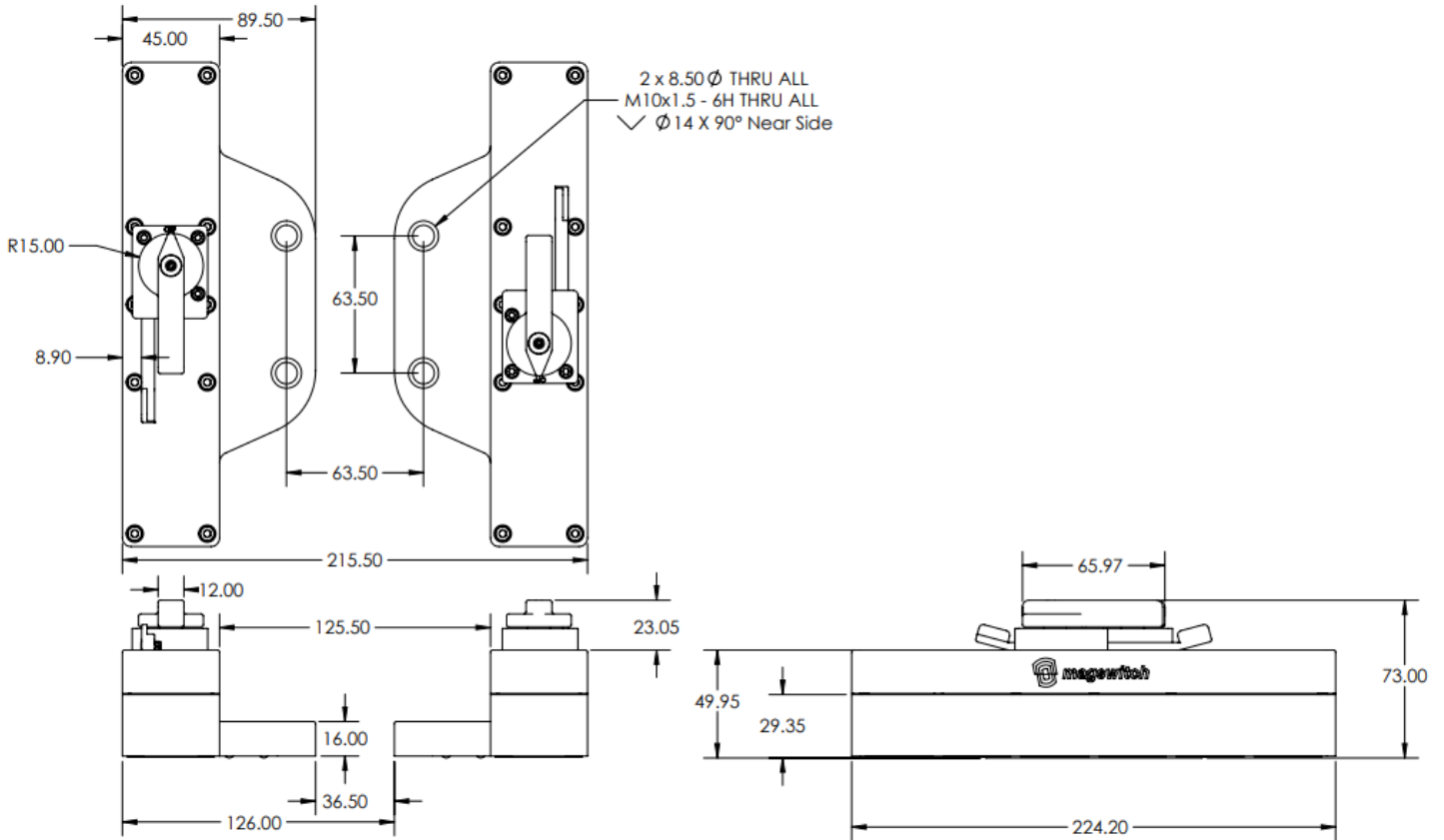
² All data applies to standard tool.

³ Determined with SAE1018 Steel L=200mm W=200mm.

⁴ Values may vary by +/- 5%.

⁵ Maximum forces listed above are not safe lifting forces. Designer must take into account safety factor when specifying tool. Magswitch recommends SWL = 5:1 for most applications.

Product Dimensions





MAGSWITCH POWER FEEDER MOUNT

P/N: 81001386
+ 1(303) 468.0662
magswitch.com

Product Dimensions (4 mounting magnets & mounting plate)

