



Magswitch Technology, Inc.  
 8774 Yates Dr. Suite 140  
 Westminster, CO 80031  
 Magswitch.com.au  
 303-468-0662

# Magswitch MagWheel 600

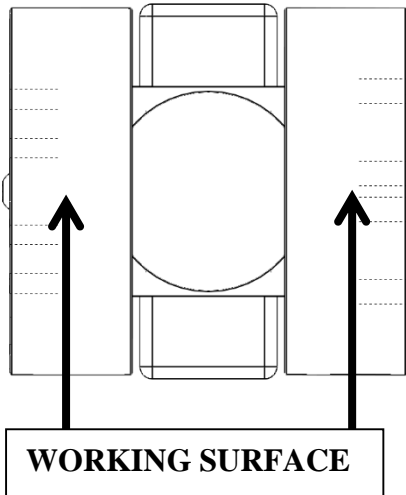
## P/N: 810075

The Magswitch MagWheel offers powerful connection for drive units on any ferrous surface enabling flat, vertical or inverse travel. Applications include positioning and guiding, sheet feeding, pipe handling, fitting and fabrication and numerous OEM automation and fixturing applications. MagWheel can be fitted with drive units for mobile applications. MagWheel results in efficiency, new applications and productive solutions.

Underneath the patented MagWheel design is the highly functional AR Housing. Through clever innovation of the original Magswitch, the MagWheel provides all the features of a standard Magswitch on the move. The magnetic flux path through the wheels means climbing, carrying and driving anywhere above or below a ferrous surface is now a reliable, fail-safe reality.



**WARNING!**  
**Do Not Operate Unless In**  
**Contact With Ferrous Target**



SPECIFICATIONS	
<b>P/N: 810077 - MAGSWITCH MagWheel 600</b>	
Max Breakaway*	292 lbs/133 kg
Net Weight	6.6 lbs/3 kg
Overall Height	124mm
Magnetic Pole Footprint	101.1mm x 90mm

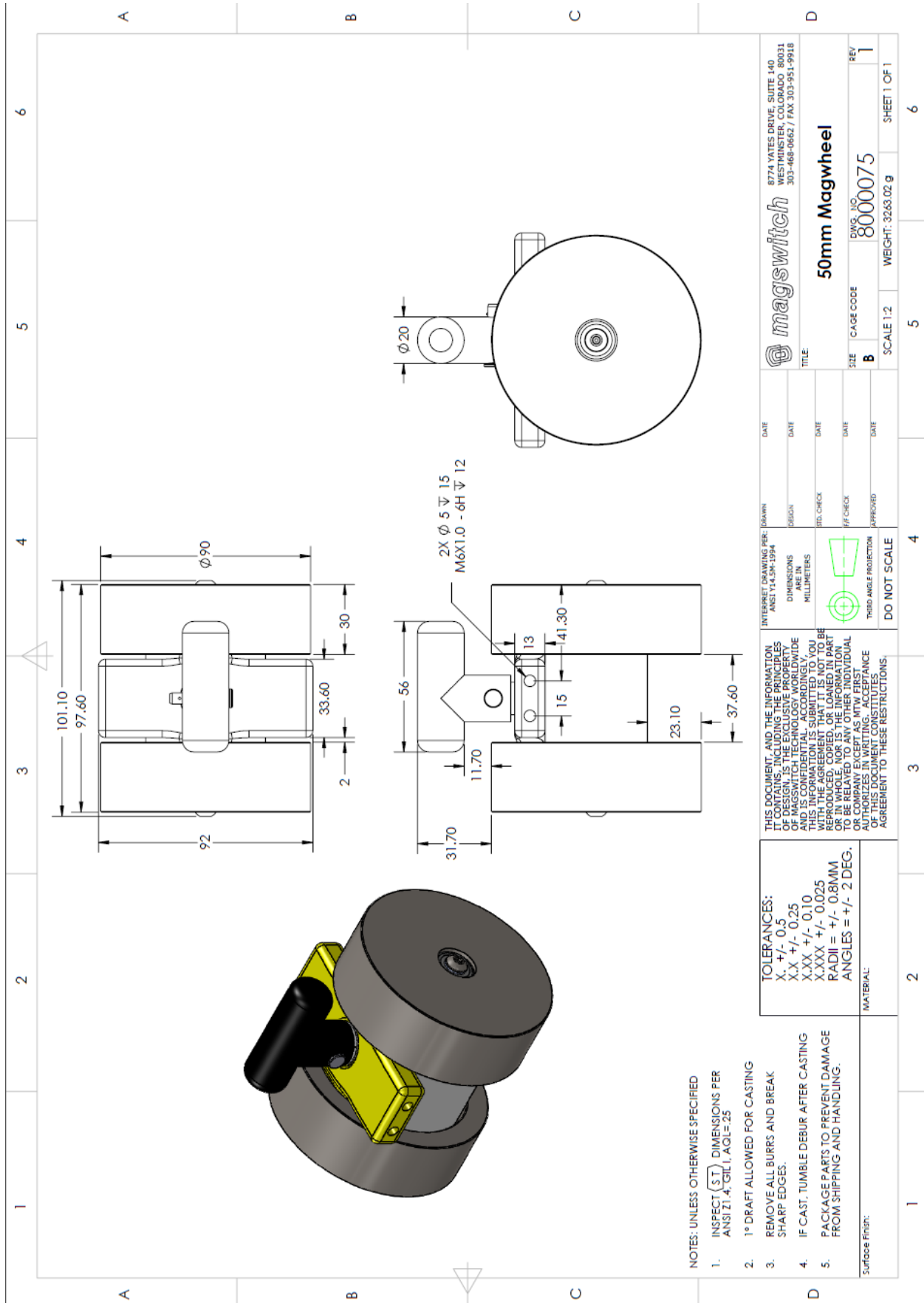
\* Max Breakaway determined in laboratory environment on 2" thick SAE1018 Steel with surface roughness 63 micro inches. Many factors contribute to the actual breakaway force in each application. Always test the magswitch in each application before deployment. Refer to the magswitch information booklet for more information.



Part Number 110692  
 Revision Date: June 26, 2012



Part Number 110692  
Revision Date: June 26, 2012



- NOTES: UNLESS OTHERWISE SPECIFIED
- INSPECT (ST) DIMENSIONS PER ANSI Z1.4, GIL1, AQL=25
  - 1° DRAFT ALLOWED FOR CASTING
  - REMOVE ALL BURRS AND BREAK SHARP EDGES.
  - IF CAST, TUMBLE DEBUR AFTER CASTING
  - PACKAGE PARTS TO PREVENT DAMAGE FROM SHIPPING AND HANDLING.

TOLERANCES:  
 X, +/- 0.5  
 X.X +/- 0.25  
 X.XX +/- 0.10  
 X.XXX +/- 0.025  
 RADII = +/- 0.8MM  
 ANGLES = +/- 2 DEG.

MATERIAL:

THIS DOCUMENT, AND THE INFORMATION IT CONTAINS, INCLUDING THE PRINCIPLES OF MAGSWITCH TECHNOLOGY, IS CONFIDENTIAL AND IS CONFIDENTIAL, ACCORDINGLY, THIS INFORMATION IS SUBMITTED TO YOU ON A NON-REPROducible, COPIED, OR LOANED IN PART OR IN WHOLE, NOR IS THE INFORMATION TO BE RELATED TO ANY OTHER INDIVIDUAL OR ENTITY WITHOUT THE WRITTEN ACCEPTANCE OF THIS DOCUMENT CONSTITUTE AN AGREEMENT TO THESE RESTRICTIONS.

INTERPRET DRAWING PER:  
 ANSI Y14.3M-1994  
 DIMENSIONS ARE IN MILLIMETERS  
 THIRD ANGLE PROJECTION  
 DO NOT SCALE

DATE	DATE	DATE	DATE	DATE	DATE
DESIGN	DESIGN	DESIGN	DESIGN	DESIGN	DESIGN
REV. CHECK	REV. CHECK	REV. CHECK	REV. CHECK	REV. CHECK	REV. CHECK
APPROVED	APPROVED	APPROVED	APPROVED	APPROVED	APPROVED
TITLE			TITLE		
50mm Magwheel			50mm Magwheel		
CAGE CODE			CAGE CODE		
8000075			8000075		
SCALE 1:2			SCALE 1:2		
WEIGHT: 32.63.02 g			WEIGHT: 32.63.02 g		
SHEET 1 OF 1			SHEET 1 OF 1		

8774 YATES DRIVE, SUITE 140  
 WESTMINSTER, COLORADO 80031  
 303-468-0662 / FAX 303-951-9918



50mm Magwheel

SIZE B  
 CAGE CODE 8000075  
 SCALE 1:2  
 WEIGHT: 32.63.02 g  
 SHEET 1 OF 1