

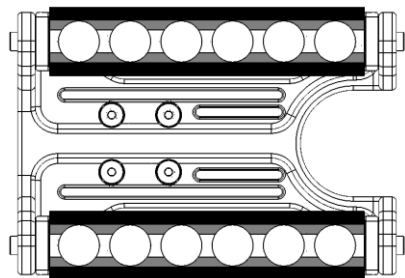


Magswitch Technology, Inc.
 1355 Horizon Ave.
 Lafayette, CO 80026
 Magswitch.com.au
 303-468-0662

Magswitch MagDrill Disruptor 55 P/N: 81001155

By combining Magswitch’s patent-pending rotating magnet technology and Euroboor’s new light weight yet powerful drill, we have created a tool that is capable of quickly and safely drilling on contoured and flat surfaces. Magswitch LAY allow for a much more efficient field on thin material, allowing more consistent tip forces up to full saturation.

WARNING!
 Do Not Operate Unless In
 Contact With Ferrous Target



WORKING SURFACE
BLACK=BEST
GRAY=MODERATE

SPECIFICATIONS	
P/N: 81001155 – Magswitch MagDrill Disruptor 55	
Magnetic Force(Full Sat)	1895 lbs./860 kg*
Magnet Assembly(L x W x H)	266mm x 191mm x 88mm 10 1/2" x 7 1/2" x 3 1/2"
Full Saturation Thickness	1/2" / 12.7mm
Max Tip Force (Full Saturation)	1055 lbs./479kg**
Smallest Pipe Diameter	3 3/16"/80mm
Speed (No Load)	500 RPM
Speed (Load 1600 W)	275 RPM
Drill Stroke	6 11/16"/170 mm
Spindle	3/4" Weldon
Annular Cutters	Ø 1/2"-2 1/4" Ø 12-55 mm
Twist Drill	Ø 1/16"-15/16" Ø 1-23 mm
Overall Height (Max)	20 7/17" – 27 7/8" 518 – 688mm
Overall Length	11 1/2"/292 mm
Overall Width	9 7/16"/239 mm
Net Weight	39 lbs. /17.6kg

* Max Breakaway determined in laboratory environment on 2" thick SAE1018 Steel with surface roughness 63 micro inches. Many factors contribute to the actual breakaway force in each application. Always test the magswitch in each application before deployment. Refer to the magswitch information booklet for more information.

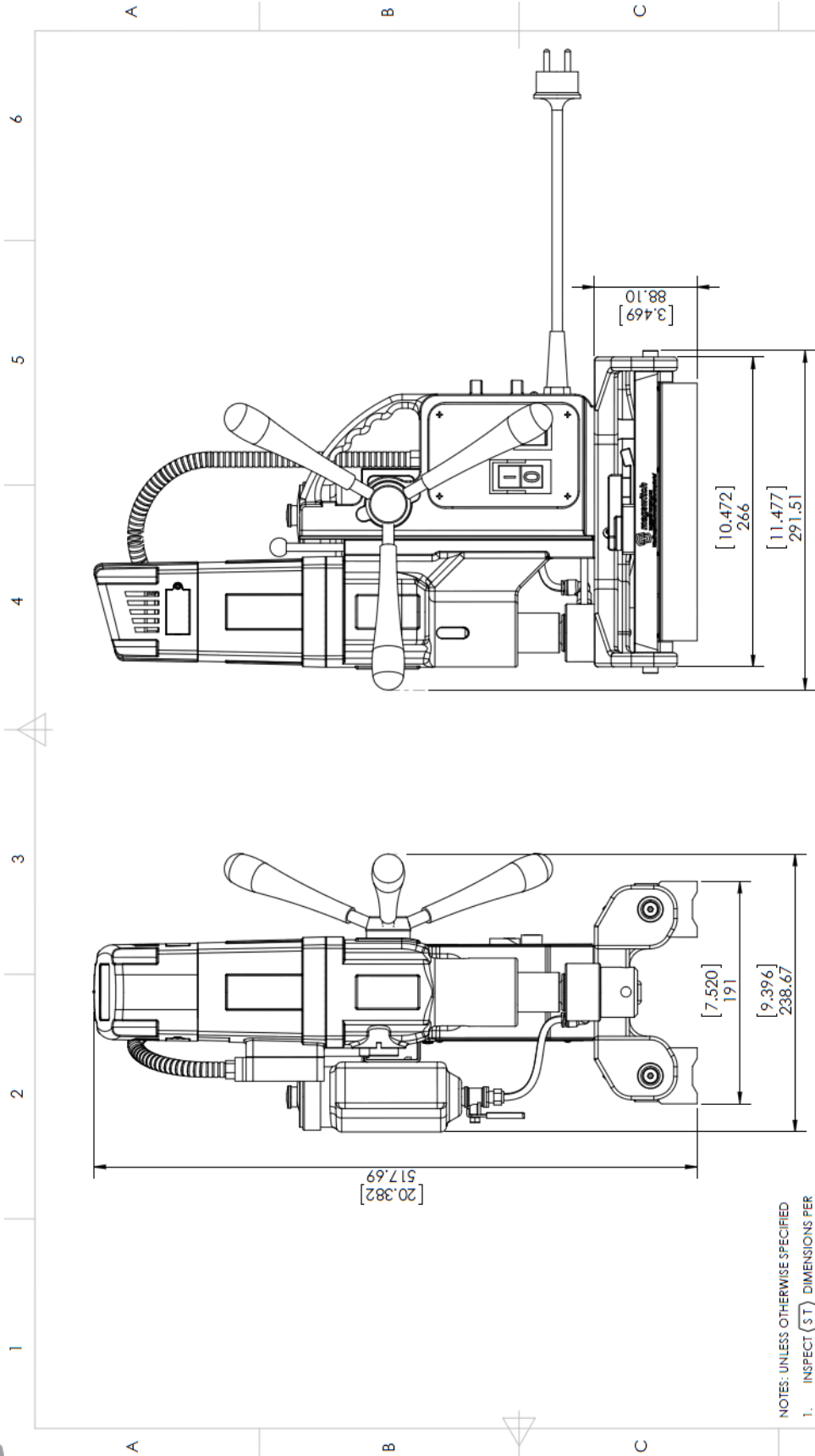
** Tip force measured on flat surface

Part Number 1101218
 Revision Date: Jun 21st, 2018





Part Number 1101218
 Revision Date: Jun 21st, 2018



- NOTES: UNLESS OTHERWISE SPECIFIED
- INSPECT (ST) DIMENSIONS PER ISO 2768-M
 - 1° DRAFT ALLOWED FOR CASTING
 - REMOVE ALL BURRS AND BREAK SHARP EDGES.
 - IF CAST, TUMBLE DEBURR AFTER CASTING
 - FOR GENERAL DIMENSIONS NOT SPECIFIED SEE 3D CAD DATA
 - SURFACE ROUGHNESS

THIS DOCUMENT AND THE INFORMATION IT CONTAINS, INCLUDING THE PRINCIPLES OF DESIGN, IS THE EXCLUSIVE PROPERTY OF MAGSWITCH TECHNOLOGY WORLDWIDE. THIS INFORMATION IS SUBMITTED TO YOU WITH THE AGREEMENT THAT IT IS NOT TO BE REPRODUCED, COPIED, LOANED, PART OR COMPANY EXCEPT AS MTW FIRST PARTY AUTHORIZED. ANY VIOLATION OF THIS AGREEMENT CONSTITUTES AN AGREEMENT TO THESE RESTRICTIONS.		INTERPRET DRAWING PER: ISO 2768-M DIMENSIONS ARE IN MILLIMETERS THIRD ANGLE PROJECTION DO NOT SCALE	DATE: 2/22/2018 DESIGNED: [Blank] STD. CHECK: [Blank] P/F CHECK: [Blank] APPROVED: [Blank]	DATE: [Blank] DATE: [Blank] DATE: [Blank] DATE: [Blank]	1355 HORIZON AVE FARMERSVILLE, OHIO 43026 303-468-0662 / FAX: 303-551-9918
@ magswitch		TITLE: BASE, MAGDRILL DISRUPTOR 55	SIZE: B CAGE CODE: [Blank] DWG. NO.: 01	SCALE: 1:10 WEIGHT: 5092.52 g	SHEET 1 OF 1