



Magswitch Technology, Inc.  
 8774 Yates Dr. Suite 140  
 Westminster, CO 80031  
 Magswitch.com.au  
 303-468-0662

# Magswitch Mag-Utility Hook 25

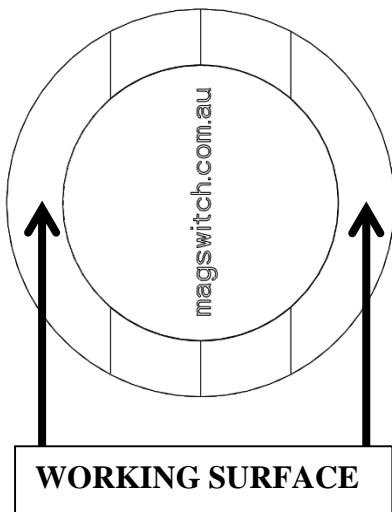
## P/N: 8100012

The Magswitch Mag-Utility Hook is the perfect “helping hand.” Magswitch Mag-Utility Hooks let you hang tools, lights, support wires, air hoses, ground lines and more, right where you need them, quickly and easily. Ideal for keeping hoses and lines off the floor for a safer work environment. Mag-Utility Hooks are convenient and easily move from job to job.

**WARNING!**  
**Do Not Operate Unless In**  
**Contact With Ferrous Target**



SPECIFICATIONS	
<b>P/N: 8100012 - MAGSWITCH Mag-Utility Hook 25</b>	
Magnet Maximum Breakaway*	120 lbs / 52.5 kg
Usable Max Breakaway*	25 lbs/11 kg
Full Saturation Thickness	11g / 3.05mm
2:1 Shear Working Load*	20 lbs / 9 kg
Net Weight	0.4 lbs/0.2 kg
Overall Height	89 mm
Magnetic Pole Footprint	40mm Diameter

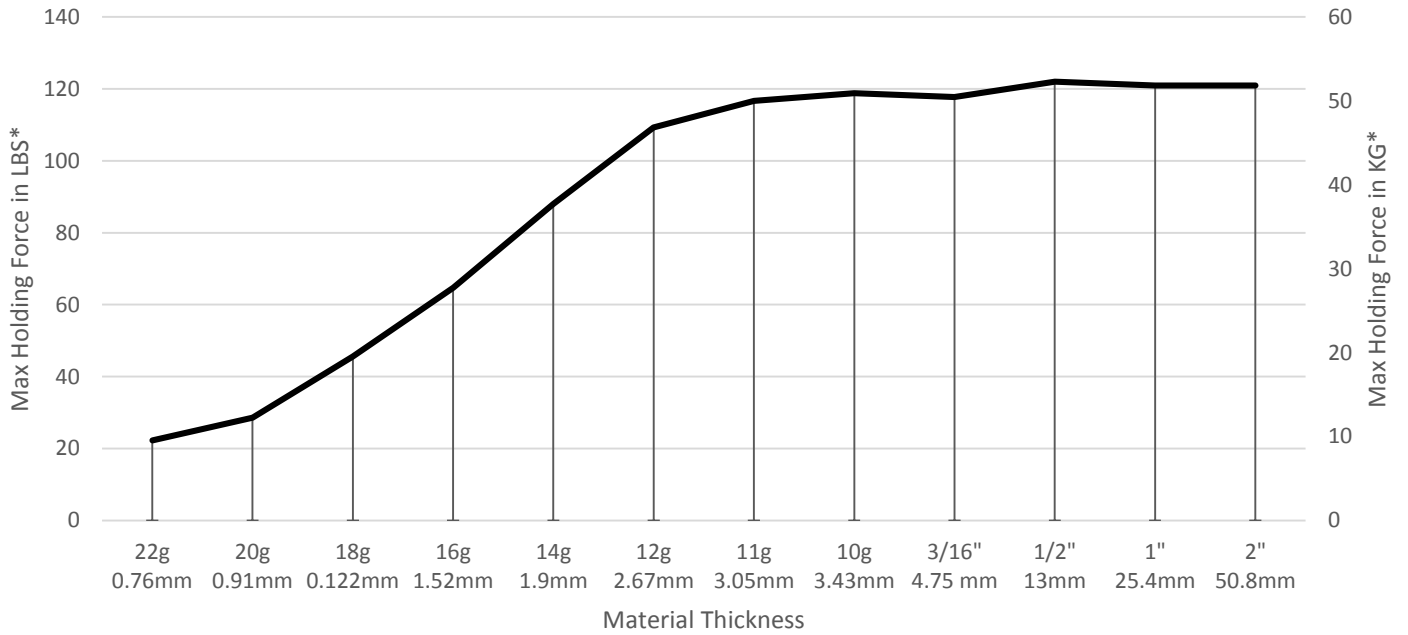


\* Max Breakaway determined in laboratory environment on 2” thick SAE1018 Steel with surface roughness 63 micro inches. Many factors contribute to the actual breakaway force in each application. Always test the magswitch in each application before deployment. Refer to the magswitch information booklet for more information.

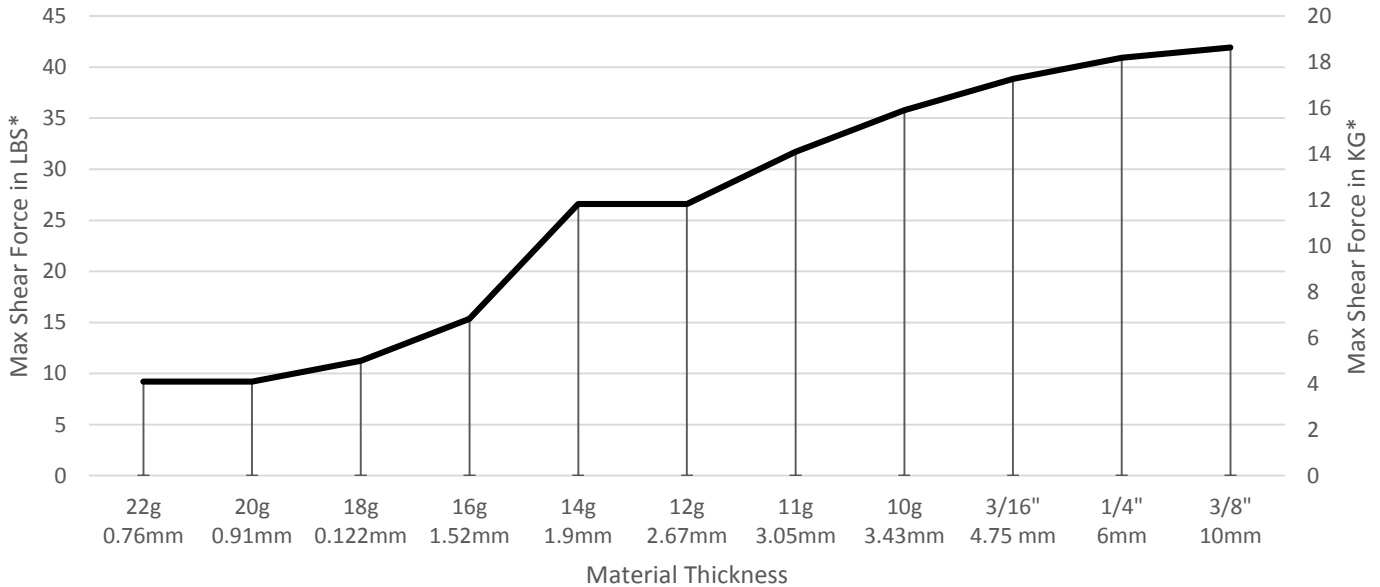


Part Number 110692  
 Revision Date: June 26, 2012

### Magswitch Mag-Utility Hook 25 Breakaway Data vs. Thickness



### Magswitch Mag-Utility Hook 25 Shear vs. Thickness

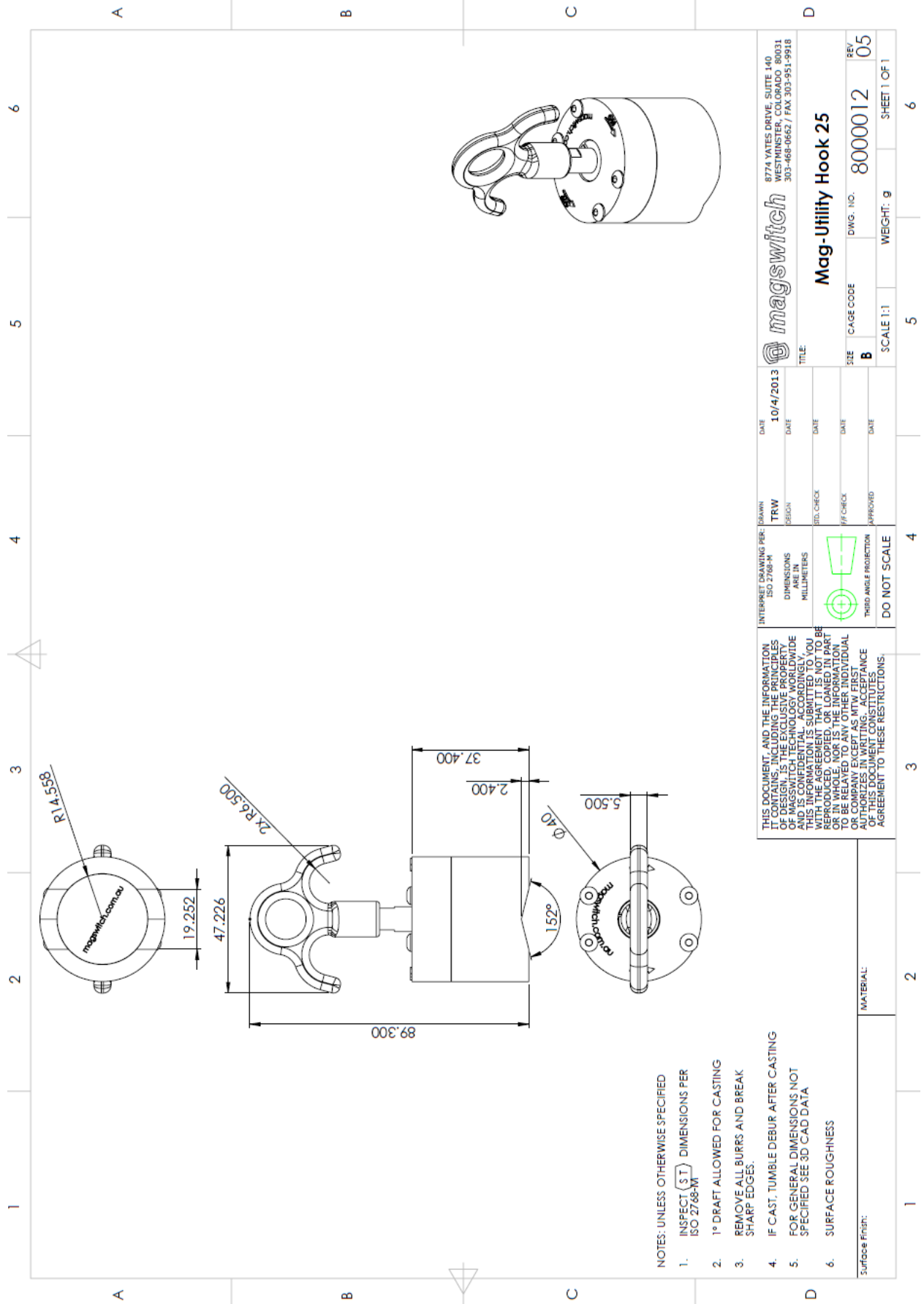


Part Number 110692  
Revision Date: June 26, 2012

\* Max Breakaway determined in laboratory environment on 2" thick SAE1018 Steel with surface roughness 63 micro inches. Many factors contribute to the actual breakaway force in each application. Always test the magswitch in each application before deployment. Refer to the magswitch information booklet for more information.



Part Number 110692  
 Revision Date: June 26, 2012



- NOTES: UNLESS OTHERWISE SPECIFIED
1. INSPECT (ST) DIMENSIONS PER ISO 2768-M
  2. 1° DRAFT ALLOWED FOR CASTING
  3. REMOVE ALL BURRS AND BREAK SHARP EDGES.
  4. IF CAST, TUMBLE DEBUR AFTER CASTING
  5. FOR GENERAL DIMENSIONS NOT SPECIFIED SEE 3D CAD DATA
  6. SURFACE ROUGHNESS

Surface Finish: MATERIAL:

THIS DOCUMENT, AND THE INFORMATION IT CONTAINS, INCLUDING THE PRINCIPLES OF DESIGN, IS THE EXCLUSIVE PROPERTY OF MAGSWITCH. YOU MAY NOT REPRODUCE, DISSEMINATE, OR OTHERWISE MAKE THIS INFORMATION AVAILABLE TO ANY OTHER INDIVIDUAL OR COMPANY WITHOUT THE WRITTEN AGREEMENT OF MAGSWITCH. ANY USE OF THIS DOCUMENT CONSTITUTES AN AGREEMENT TO THESE RESTRICTIONS.

INTERPRET DRAWING PER: ISO 2768-M DIMENSIONS ARE IN MILLIMETERS	DATE 10/4/2013	DRAWN TRW	DATE 10/4/2013		8774 VATES DRIVE, SUITE 140 WESTMINSTER, COLORADO, 80031 303-468-0662 / FAX 303-951-9918
	DESIGN	DATE	DATE	TITLE: <b>Mag-Utility Hook 25</b>	REV 05
DO NOT SCALE	REL. CHECK	DATE	DATE	SIZE B	CAGE CODE
	APP. CHECK	DATE	DATE	SCALE 1:1	DWG. NO. 8000012
	APPROVED	DATE	DATE	WEIGHT: 9	SHEET 1 OF 1