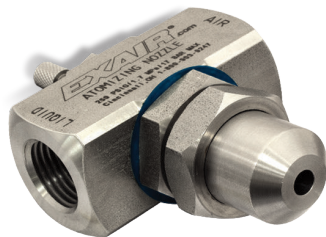




# Air Atomizing Spray Nozzles

## Internal Mix Narrow Angle Round Pattern - 1/2 NPT



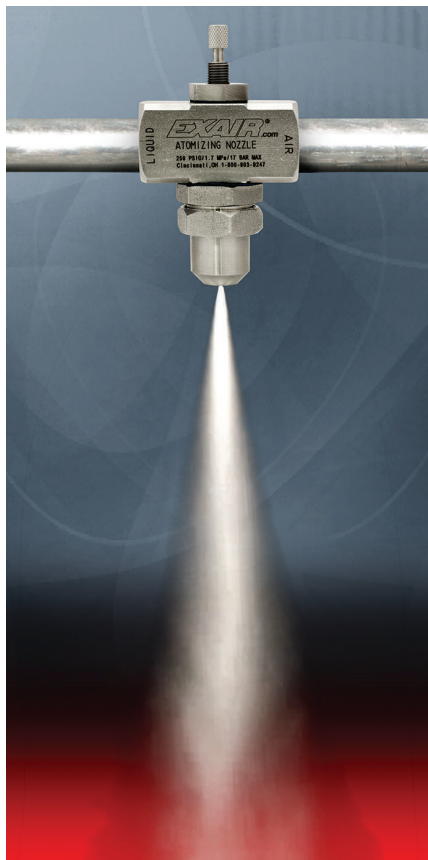
**Model: AN5010SS**  
**Material: Type 303 Stainless Steel**

**Model: AN5020SS**  
**Material: Type 303 Stainless Steel**

### Model AN5010SS and AN5020SS

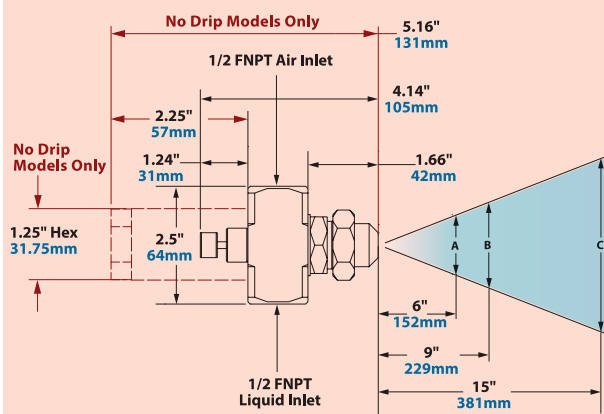
1/2 NPT internal mix narrow angle round pattern nozzles are excellent for spraying a concentrated mist of liquid. Because of the versatility of their adjustments, these larger atomizing nozzles can apply a heavy coat up close or send a very fine mist over 40 feet away! They are often used for higher volume application of lubricants during assembly, or marking items as they move through an assembly line.

**For pressure fed applications not requiring independent air and liquid control.**



With adjustable liquid flow, these nozzles can be used to apply a heavy coat or a precise volume of liquid.

### Dimensions and Airflow Pattern



**No Drip Only Dimensions in Red**  
 See page 93 for No Drip Atomizing Nozzles

### Spray Dimensions

Model	Pressure		Width						Max. Depth	
	Air PSI/BAR	Liquid PSI/BAR	A		B		C		feet	m
			in	cm	in	cm	in	cm		
AN5010SS	20	1.4	5	0.3					22	6.7
	36	2.5	15	1.0					30	9.1
	50	3.4	25	1.7	3.5	9	5.75	14.6	8.5	22
	60	4.1	35	2.4					37	11.3
AN5020SS	10	0.7	5	0.3	4	10	6	15.2	8.5	22
	32	2.2	25	1.7	5.5	14	7.5	19.1	10	25
	44	3.0	35	2.4	6	15	9	22.9	10.5	27
	64	4.4	55	3.8	6	15	9	22.9	10.5	27

Model	5 PSI/0.3 BAR Liquid					15 PSI/1.0 BAR Liquid					25 PSI/1.7 BAR Liquid					35 PSI/2.4 BAR Liquid					55 PSI/3.8 BAR Liquid									
	Air Pressure PSI/BAR	GPH/LPH	SCFM/SLPM	Air Pressure PSI/BAR	GPH/LPH	SCFM/SLPM	Air Pressure PSI/BAR	GPH/LPH	SCFM/SLPM	Air Pressure PSI/BAR	GPH/LPH	SCFM/SLPM	Air Pressure PSI/BAR	GPH/LPH	SCFM/SLPM	Air Pressure PSI/BAR	GPH/LPH	SCFM/SLPM	Air Pressure PSI/BAR	GPH/LPH	SCFM/SLPM									
AN5010SS	18	1.2	9	34.1	12	339.8	28	1.9	27	102.2	14.5	411	38	2.6	51.6	195.3	16.4	464	48	3.3	75.6	286	18.4	521	---	---	---	---	---	---
	20	1.4	7	26.5	12.8	362.5	32	2.2	20	75.7	16.2	459	44	3.0	32.4	122.6	19.5	552	60	4.1	36.6	139	25.3	716	---	---	---	---	---	---
	22	1.5	6	22.7	13.6	385.2	38	2.6	20	75.7	19	538	54	3.7	22	83.3	24.3	688	72	5.0	21.6	82	31.0	878	---	---	---	---	---	---
	24	1.7	4.5	17.0	14.5	410.6	42	2.9	12.5	47.3	20.4	578	60	4.1	18	68.1	26.9	762	78	5.4	16.8	64	33.7	954	---	---	---	---	---	---
AN5020SS	10	0.7	30	113.6	13.7	388.0	18	1.2	98.4	372.4	15.6	442	26	1.8	159	601.8	17.6	498	36	2.5	183	693	20.0	566	54	3.7	231	874.3	26.0	736
	12	0.8	18.6	70.4	16.2	458.8	20	1.4	73.2	277.1	17.9	507	32	2.2	99	374.7	23.7	671	42	2.9	126	477	26.1	739	60	4.1	168	635.9	33.4	946
	---	---	---	---	---	---	22	1.5	63.6	240.7	20.3	575	36	2.5	75	283.9	28.6	810	46	3.2	96	363	31.0	878	72	5.0	76	287.7	47.2	1337
	---	---	---	---	---	---	24	1.7	52.8	199.8	22.6	640	40	2.8	57.6	218.0	33.0	935	52	3.6	71	269	37.7	1068	76	5.2	54	204.4	51.3	1453