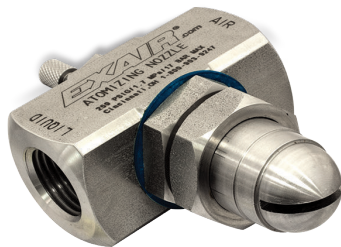




# Air Atomizing Spray Nozzles

## Internal Mix Flat Fan Pattern - 1/2 NPT



### Model AF5010SS and AF5020SS

1/2 NPT internal mix flat fan pattern atomizing nozzles are designed with efficiency in mind. Especially good for vertical or horizontal assembly lines, the broad thin pattern of these larger atomizing nozzles makes efficient use of your expensive liquids. Their output can be adjusted for a very light film or a heavy coat of atomized liquid. Whether it's applying paint to hanging sheet metal, or using a water mist to cool a laminate web, flat fan atomizing nozzles cover a wide flat area, ideal for products moving on a conveyor.

**Model: AF5010SS**

**Material:** Type 303 Stainless Steel

**Model: AF5020SS**

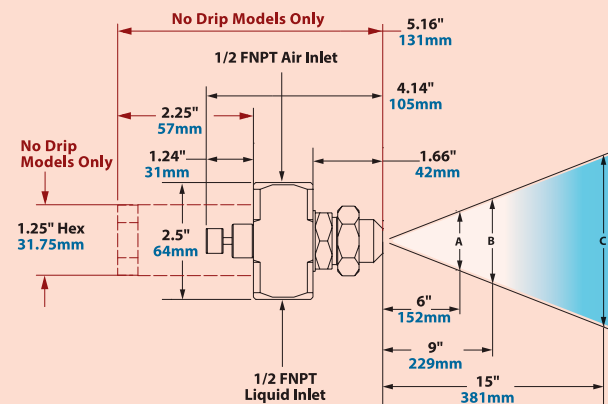
**Material:** Type 303 Stainless Steel



Use the adjustable liquid valve to apply just the right amount of liquid for your application.

For pressure fed applications not requiring independent air and liquid control.

### Dimensions and Airflow Pattern



No Drip Only Dimensions in Red  
See page 93 for No Drip Atomizing Nozzles

### Need Help Choosing The Best Atomizing Nozzle For Your Application?

Not sure which atomizing nozzle is required?

Our Application Engineers can assist you in determining the correct model. Call 1-800-903-9247 to speak with an Application Engineer.

Spray Dimensions												
Model	Pressure				Width						Max. Depth	
	Air PSI/BAR		Liquid PSI/BAR		A		B		C		feet	m
	in	cm	in	cm	in	cm	in	cm				
AF5010SS	20	1.4	10	0.7	25	64	34	86	45	114	14	4.3
	40	2.8	20	1.4	28	71	36	91	46	117	18	5.5
	50	3.4	25	1.7	29	74	38	97	48	122	22	6.7
	70	4.8	40	2.8	32	81	42	107	51	130	27	8.2
AF5020SS	10	0.7	5	0.3	21	53	27	69	36	91	13	4.0
	20	1.4	15	1.0	34	86	42	107	52	132	15	4.6
	44	3.0	35	2.4	39	99	47	119	64	163	19	5.8
	64	4.4	55	3.8	40	102	50	127	68	173	20	6.1

Model	5 PSI/0.3 BAR Liquid					15 PSI/1.0 BAR Liquid					25 PSI/1.7 BAR Liquid					35 PSI/2.4 BAR Liquid					55 PSI/3.8 BAR Liquid									
	Air Pressure PSI/BAR	GPH/LPH	SCFM/SLPM	Air Pressure PSI/BAR	GPH/LPH	SCFM/SLPM	Air Pressure PSI/BAR	GPH/LPH	SCFM/SLPM	Air Pressure PSI/BAR	GPH/LPH	SCFM/SLPM	Air Pressure PSI/BAR	GPH/LPH	SCFM/SLPM	Air Pressure PSI/BAR	GPH/LPH	SCFM/SLPM	Air Pressure PSI/BAR	GPH/LPH	SCFM/SLPM									
AF5010SS	---	---	---	28	1.9	33.6	127	23.4	663	44	3.0	38.4	145	32.4	918	58	4.0	46.2	175	40.3	1141	---	---	---	---	---	---			
	---	---	---	30	2.1	25.2	95	25.3	716	48	3.3	35.8	136	36.2	1025	62	4.3	34.8	132	43.5	1232	---	---	---	---	---	---			
	---	---	---	34	2.3	12.6	48	28.7	813	50	3.4	18	68	38.0	1076	65	4.5	25.2	95	46.0	1303	---	---	---	---	---	---			
	---	---	---	36	2.5	11.5	44	31.2	884	60	4.1	3.5	13	46.0	1303	70	4.8	16.2	61	49.7	1408	---	---	---	---	---	---			
AF5020SS	10	0.69	18	68	18.0	510	18	1.2	87.6	332	15.6	442	26	1.8	150	568	17.9	507	36	2.5	177	670	22.3	632	54	3.7	231	874	29.3	830
	12	0.83	6	23	6.0	170	20	1.4	62.4	236	18.4	521	30	2.1	99	375	22.3	632	40	2.8	132	500	26.6	753	60	4.1	186	704	35.6	1008
	---	---	---	---	---	---	22	1.5	45.6	173	20.6	583	36	2.5	50.4	191	29.9	847	46	3.2	76.8	291	34.4	974	68	4.7	108	409	44.4	1257
	---	---	---	---	---	---	24	1.7	30.6	116	23.3	660	40	2.8	26.4	100	35.2	997	52	3.6	38.4	145	41.5	1175	76	5.2	66	250	53.13	1505



# No Drip Air Atomizing Spray Nozzles



## No Drip Air Atomizing Spray Nozzles



## Eliminate drips to conserve valuable liquids and improve product finishes!

### What Are No Drip Atomizing Nozzles?

EXAIR's patented† no drip atomizing spray nozzles work in the same way our standard atomizing nozzles do, but have the added benefit of positively stopping liquid flow when compressed air is shut off. All models use stainless steel construction for durability and corrosion resistance.

*EXAIR's no drip atomizing nozzles are available in 3 basic families:*

#### Internal Mix:

Internal mix nozzles mix the liquid and air inside the air cap and produce the finest atomization. Internal mix nozzles can be used on liquids with a viscosity up to 300 cP. Both air and liquid sides are pressure fed. **No Drip Internal Mix Atomizing Nozzles are for pressure fed applications not requiring independent air and liquid control.**

#### External Mix:

External mix nozzles have the highest flow rates and allow the air and liquid flows to be adjusted independently. These nozzles are best where precise liquid flow is needed. External mix nozzles can be used on liquids with a viscosity above 300 cP. Both air and liquid sides are pressure fed. **No Drip External Mix Atomizing Nozzles are for pressure fed applications with independent air and liquid control.**

#### Siphon Fed:

Siphon fed nozzles require no liquid pressure and can be used with gravity fed liquids or lift liquids from a siphon height as much as 36 inches (91cm). Siphon fed nozzles can be used on liquids with a viscosity up to 200 cP. **No Drip Siphon Fed Atomizing Nozzles are siphon or gravity fed for non-pressurized applications.**

† Patent #9156045

### Why No Drip Atomizing Nozzles?

When spraying any type of liquid, post-spray liquid flow can cause big problems. Unwanted drips can ruin product finishes on painted or coated surfaces. In addition, excess liquid flow wastes precious resources such as expensive coatings, chemicals or water. EXAIR's no drip atomizing nozzles are ideal where no post-spray drip is permissible. When the compressed air supply is shut off, the no drip nozzle positively seals off the flow of liquid eliminating the possibility of drips. They can be used in any situation that our standard atomizing nozzles can be used, including Siphon Fed applications. Unlike some manufacturers, there's no need to run a separate air line to control the no drip mechanism. The same compressed air used to combine and atomize liquid in a variety of patterns is used to open a valve allowing liquid to flow. That makes these ideal for use with EXAIR's money and energy saving EFC (see page 7).

EXAIR's no drip nozzles do not change flow rates from standard atomizing nozzles. Operations that require up to 180 cycles per minute can be achieved. Minimum operating air pressure of 30 PSIG (2.1 BAR) required for 1/4 and 1/2 NPT nozzles. 20 PSIG (1.4 BAR) is required for 1/8 NPT nozzles.



Mounting Brackets are available - Model 901786 for 1/8 NPT, Model 901318 for 1/4 NPT and Model 901556 for 1/2 NPT atomizing nozzles.

### Applications

- Painting
- Coating
- Rinsing
- Cooling
- Quenching
- Wetting (moistening)
- Humidification
- Dust Control

### Advantages

- No post spray drip
- Adjustable
- Easily used with an EFC
- Minimizes air and liquid consumption
- All stainless steel construction
- Fine atomization
- Interchangeable liquid and air caps
- Compact