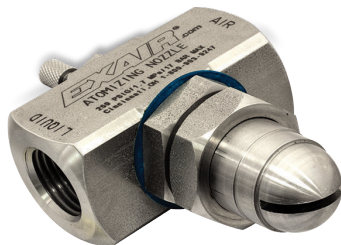




# Air Atomizing Spray Nozzles

## Internal Mix Flat Fan Pattern - 1/2 NPT



### Model AF5010SS and AF5020SS

1/2 NPT internal mix flat fan pattern atomizing nozzles are designed with efficiency in mind. Especially good for vertical or horizontal assembly lines, the broad thin pattern of these larger atomizing nozzles makes efficient use of your expensive liquids. Their output can be adjusted for a very light film or a heavy coat of atomized liquid. Whether it's applying paint to hanging sheet metal, or using a water mist to cool a laminate web, flat fan atomizing nozzles cover a wide flat area, ideal for products moving on a conveyor.

**Model: AF5010SS**

**Material:** Type 303 Stainless Steel

**Model: AF5020SS**

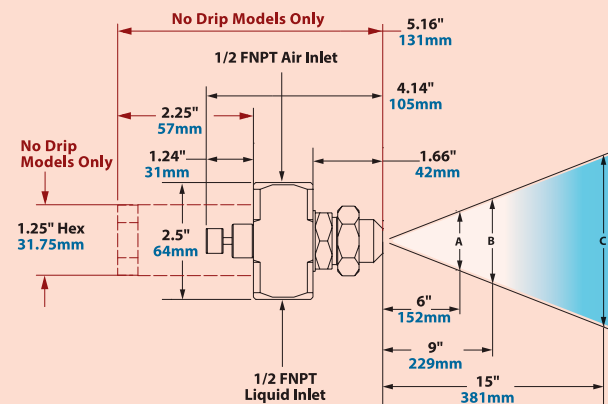
**Material:** Type 303 Stainless Steel



Use the adjustable liquid valve to apply just the right amount of liquid for your application.

For pressure fed applications not requiring independent air and liquid control.

### Dimensions and Airflow Pattern



No Drip Only Dimensions in Red  
See page 93 for No Drip Atomizing Nozzles

### Need Help Choosing The Best Atomizing Nozzle For Your Application?

Not sure which atomizing nozzle is required?

Our Application Engineers can assist you in determining the correct model. Call 1-800-903-9247 to speak with an Application Engineer.

Spray Dimensions												
Model	Pressure				Width						Max. Depth	
	Air PSI/BAR		Liquid PSI/BAR		A		B		C		feet	m
	in	cm	in	cm	in	cm	in	cm				
AF5010SS	20	1.4	10	0.7	25	64	34	86	45	114	14	4.3
	40	2.8	20	1.4	28	71	36	91	46	117	18	5.5
	50	3.4	25	1.7	29	74	38	97	48	122	22	6.7
	70	4.8	40	2.8	32	81	42	107	51	130	27	8.2
AF5020SS	10	0.7	5	0.3	21	53	27	69	36	91	13	4.0
	20	1.4	15	1.0	34	86	42	107	52	132	15	4.6
	44	3.0	35	2.4	39	99	47	119	64	163	19	5.8
	64	4.4	55	3.8	40	102	50	127	68	173	20	6.1

Model	5 PSI/0.3 BAR Liquid					15 PSI/1.0 BAR Liquid					25 PSI/1.7 BAR Liquid					35 PSI/2.4 BAR Liquid					55 PSI/3.8 BAR Liquid									
	Air Pressure PSI/BAR	GPH/LPH	SCFM/SLPM	Air Pressure PSI/BAR	GPH/LPH	SCFM/SLPM	Air Pressure PSI/BAR	GPH/LPH	SCFM/SLPM	Air Pressure PSI/BAR	GPH/LPH	SCFM/SLPM	Air Pressure PSI/BAR	GPH/LPH	SCFM/SLPM	Air Pressure PSI/BAR	GPH/LPH	SCFM/SLPM	Air Pressure PSI/BAR	GPH/LPH	SCFM/SLPM									
AF5010SS	---	---	---	---	---	28	1.9	33.6	127	23.4	663	44	3.0	38.4	145	32.4	918	58	4.0	46.2	175	40.3	1141	---	---	---	---	---	---	
	---	---	---	---	---	30	2.1	25.2	95	25.3	716	48	3.3	35.8	136	36.2	1025	62	4.3	34.8	132	43.5	1232	---	---	---	---	---	---	
	---	---	---	---	---	34	2.3	12.6	48	28.7	813	50	3.4	18	68	38.0	1076	65	4.5	25.2	95	46.0	1303	---	---	---	---	---	---	
	---	---	---	---	---	36	2.5	11.5	44	31.2	884	60	4.1	3.5	13	46.0	1303	70	4.8	16.2	61	49.7	1408	---	---	---	---	---	---	
AF5020SS	10	0.69	18	68	18.0	510	18	1.2	87.6	332	15.6	442	26	1.8	150	568	17.9	507	36	2.5	177	670	22.3	632	54	3.7	231	874	29.3	830
	12	0.83	6	23	6.0	170	20	1.4	62.4	236	18.4	521	30	2.1	99	375	22.3	632	40	2.8	132	500	26.6	753	60	4.1	186	704	35.6	1008
	---	---	---	---	---	---	22	1.5	45.6	173	20.6	583	36	2.5	50.4	191	29.9	847	46	3.2	76.8	291	34.4	974	68	4.7	108	409	44.4	1257
	---	---	---	---	---	---	24	1.7	30.6	116	23.3	660	40	2.8	26.4	100	35.2	997	52	3.6	38.4	145	41.5	1175	76	5.2	66	250	53.13	1505